

Photo Contest

This photo competition is gonna be a doozie. There are five categories with a wide range of submissions allowed, and the contest runs the whole summer long. Events are being specially planned to help you take some winning shots. Check it out!

Qualifications

A Pi member in good standing



Categories

*People
Places
Things
Orientation
Shoebox*

Two Classes



Novice and Advanced

Duration

June 1st thru August 31st



Awards

Trophy and Certificates



Photographs Wanted!

This Photo Contest builds on the preceding ones, with a goal of having more participation, more images, and more fun! The categories are wide-open, awards more versatile, and opportunities to learn how to take a better photos will also be part of the competition. Care to join in?

General Guidelines

- You need to be a member of the Pi in good standing through August 31st to participate.
- There are two, self-determined classes of contestants: Novice and Advanced.
- The categories are People, Places, Things, Orientation, and Shoebox.
- Up to three images can be entered per category, but no more than a total of eight photos overall.
- There will be one winner in each category for each class. Other notable photos will be awarded Honorable Mention.



Best in Show Winner for the second Washington Apple Pi Photo Contest. The image of Georgetown on the banks of the Potomac River was taken using an infrared filter. Stunning photo!

- The Best of Show trophy will go to best overall photo as determined by the judges.
- The contest period is from June 1st through August 31st. Images must be taken between these dates except in the Shoebox category.
- Contest photos can be submitted by uploading via your Connect page on the Pi Web site. It can be reached at the following Web address: <https://connect.wap.org>. Alternate delivery means will also be available.

- Contest results will be announced at the September 25th General Meeting.
- Winning images will be printed and displayed at the Washington Apple Pi Clubhouse.

Additional Comments

All members of the Pi are highly encouraged to participate in this club sponsored event. Our two previous contests had a goodly number of entries, and we are hoping to increase involvement. Cameras at the ready — CLICK!

There are some subtle differences in this year's contest. The Categories, the allowed number of entries, and the method for submitting have been adjusted. One less subtle change is that we are limiting entries in four of the five categories to photos taken only during the contest period. This requirement nudges everyone to actively seek out subject matter for each category. To help with the process, we will be providing tips and techniques to educate members on what makes a good photograph and how to capture it. Look for these contest related events at various times during the contest period. Read on!

— The Photo Contest Committee

RULES OF THE ROAD

All of the rules for the contest are provided on the last page of this document. They make for dull reading, so here are some highlights to get you primed.

CATEGORIES



PHOTO MANIPULATION

Only the most basic photo adjusting is allowed. This photo manipulation includes cropping and limited enhancements which includes only color and lighting adjustments and sharpening. No advanced photo manipulation is allowed such as layering and use of Stamp, Cloning or other similar Photoshop tools.

CONTESTANT CLASS

There are two classes of entrants, the pro and the amateur. You should know who you are. If you are really serious about taking photos, in the photography business, or enter photo contests regularly, you should probably be in the Advanced Class. The Novice is someone who isn't an overly discerning shutterbug but still enjoys taking and looking at pictures. You be the judge on this one.

DATES AND CERTIFICATION

The contest period is June 1, 2010 through August 31, 2010, midnight, to be precise. Submissions will be accepted through September 10, but they have to have been taken before the end of the contest period.

PHOTO SUBMISSION

This contest will feature a new, streamlined method for submitting photo entries. With a slick Web page interface, entrants need only log in to their personal Pi Connect page at connect.wap.org. Once logged in, clicking on Photo in the sidebar will bring up a page in which, after a few clicks and insertion of text, your photos will be securely uploaded for review. After a contest volunteer checks out the photo submissions, the member will be able to confirm that they have been accepted into the contest.

Let the Games Begin!

People

Funny expressions, tender looks, or just an odd pose; this group should have at least one member of the human race in the frame. Of course, it is the



interaction of two or more that can really add to the captured moment.

Places

Tenleytown to Timbuktu and in between, all will qualify nicely. Or maybe just your backyard will offer up the right setting. The idea is to capture a



location, notable or otherwise, with interesting content. The main focus could be structures, architecture, or a creation of nature.

Things

Inanimate or alive, it doesn't matter. From pets to pots, flowers to facades, or birds to beasts, as long as no person is in the photo it will meet the standard. This is a great category to showcase spectacular foliage photos, pictures of the family pet, or some amazing shots of a breathtaking landscape. Don't overlook man-made structures either, such as some of the architectural wonders that exist in your very own locale.



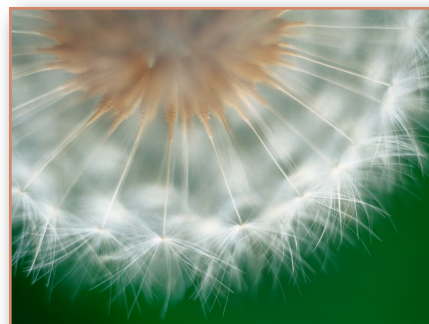
Orientation

This category is unique and may take some real imagination. The obvious key is to photograph subject matter that defies convention; no top or



bottom. If the photo can be viewed any-which-way, it is in. Should you have something that gives away position on the periphery of photo, get out the cropping tool and snip it off.

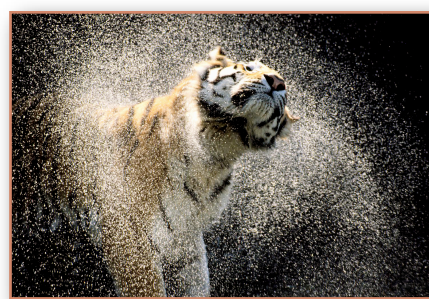
Need another example? Does the angle of the light give it away? There are other considerations like shadows, streaks, or running droplets of water.



Look closely to make sure, and to cinch it, just turn the image a quarter turn again and again.

Shoebox

There is no photo that is exempt. Dig through those stacks of old photographs, scan them into digits, and submit. Likewise, sort through your digital image collection for that one (or more) unique capture. Of course, the subject matter, context and image quality are going to play a huge part. This category has the potential for producing the Best of Show winner. Can you come up with an image as striking as the first contest winning photograph as shown below?



Rules, Edits, and How to Submit

The rules are few but there are some constraints; please, review carefully. Photo enhancements are allowed, within limits. There is an easy way to enter your submissions, but having broadband will be essential. Read on!

Washington Apple Pi Photo Contest Rules

- Contest is only for Washington Apple Pi members who have active accounts through August 31, 2010. A contestant must be the same person as the photographer and the submitter.
- Each contestant determines his or her Class or skill level. There are two: Advanced or Novice.
- Photos must have been taken within the contest period (June 1 through August 31), except in the Shoebox category which will have no date restriction. Any submissions in any category cannot have been entered into any other photo contest.
- A limit of eight (8) photos can be entered in the contest with a limit of three (3) per category.
- An image can only be entered into one category.
- Only basic photo manipulation of an image is allowed — see a detailed explanation below and on the previous page.
- Image submissions will be entered by uploading them via the member's Connect Web page. An alternate method of delivery via digital data CD/DVD or flash drive will be accommodated in special circumstances. Email submissions will not be accepted.
- Only JPEG and TIFF format files will be accepted. The higher the resolution, the better.
- Basic entrant info will be collected when uploading images. A caption should be included for each photo submitted. If entries are submitted other than through the Connect Web page; include name, class, image category and caption.
- One category winner will be chosen from each category for each class of contestant. Any number of Honorable Mentions can be awarded in each category for other notable photos.
- A Best of Show winner will be chosen from all submissions and will be awarded the associated traveling trophy.
- Certificates will be given to Advanced and Novice winners and to Honorable Mentions awardees.
- Contest entry serves as default permission to place the contestant's image on the Washington Apple Pi Web site and to reproduce it in other mediums, such as in the Washington Apple Pi *Journal*. The Pi further reserves the right to display a print of the image wherever it reasonably sees fit.
- Judges decisions are final.

Image Edits Allowed



- Cropping
- Burning and dodging
- Sharpening
- Red-eye correction
- Correcting to natural colors, e.g., removing green cast caused by fluorescent lighting
- Stitching images together to create a panorama
- Fixing perspective (skewing)
- Refining brightness, saturation, and contrast
- Converting a color image to only sepia or black-and-white

Submitting Images

All your photo entries can be uploaded using your Pi Connect Web page. Just go to the link below and start transmitting.

connect.wap.org/photo

Plan B

Data CD/DVD or flash drive mailed or delivered to the Pi Clubhouse address below by closing day of contest.

Washington Apple Pi
12022 Parklawn Drive
Rockville, MD 20852